

FLOOR, STANDARD DESIGN, Verra Construction C600

PRODUCT DESCRIPTION

Product Description
No. C600.01 Eng
Jan 09

Industrial system for chemically and mechanically highly resistant flooring and cladding. This system provides excellent surface characteristics while insulating and protecting sensitive building components like concrete or steel. The floor provides excellent work surfaces for areas where chemical and mechanical resistance, hygiene, durability, long life and low risk of future operation disturbances is important.

C600 industrial floors



Characteristics of the C600 flooring system

- Complete surface cladding system - floors, walls and other surfaces
- Ceramic tiles with accessories, joint and setting (adhesive) material are all matched for a complete system without weaker components
- The cladding system is designed so as not to need movement joints, unless such joints are needed in the supporting structure.
- Tiles in the cladding system can be chosen to vary colour and surface characteristics

Components of the C600 flooring system

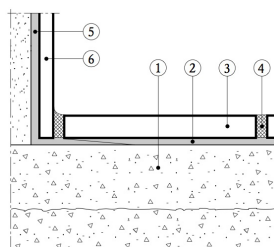
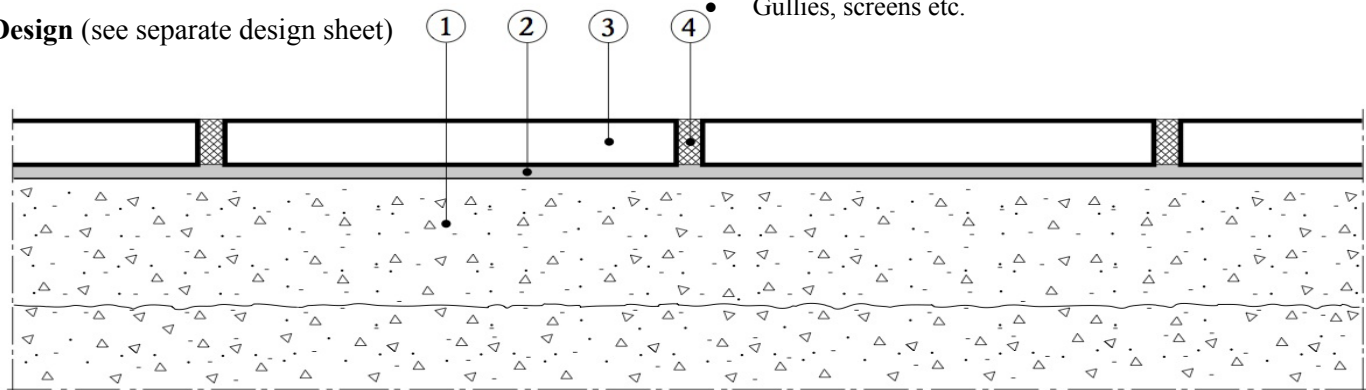
Standard Components (see separate product data sheets)

- Industrial ceramic tiles
- Setting (adhesive) material epoxy Veranit H48
- Joint material epoxy Veranit H63
- Flexible joints Veranit H50

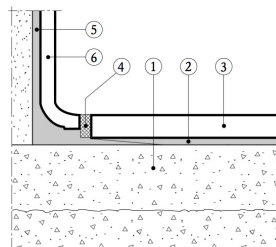
Accessories

- Expansion joints
- Special joints
- Movement distribution and additional insulation neoprene
- Gullies, screens etc.

Design (see separate design sheet)



Cross-section through wall/floor



Cross-section through wall/floor with cove skirting tile

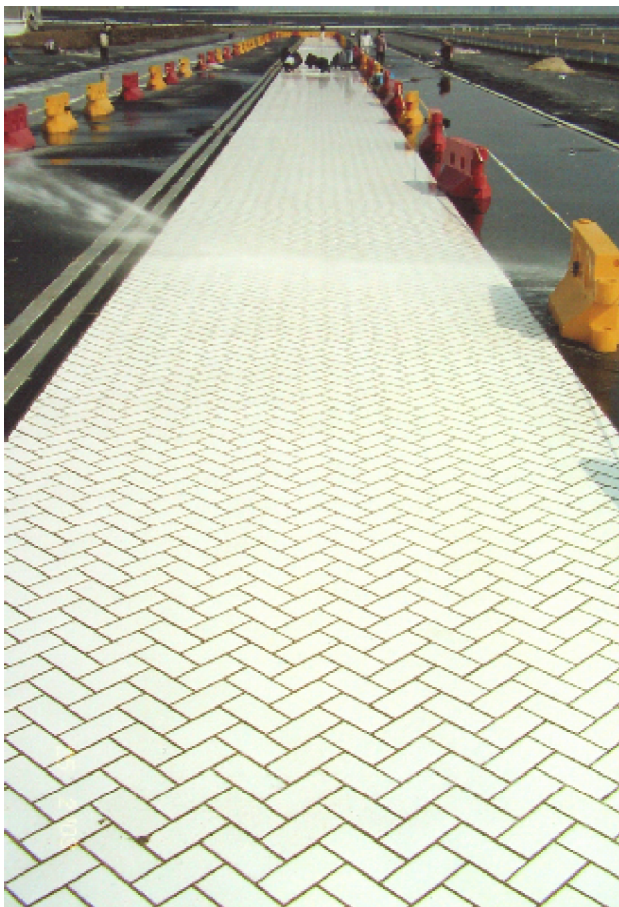
Legend

1. Sub-floor
2. Adhesive
3. Tiles
4. Joints
5. Adhesive
6. Skirtings

Indicators for choice of the C600 design

The Standard C600 Design is recommended for surfaces with one or more of the following demands:

- Safe and hygienic work environment
- Liquid proof
- Low absorption of water or other liquids
- Resisting variations in temperature and moisture and deterioration over time
- Resisting chemical attacks
- Protecting other building materials with double epoxy barriers
- Easy to clean and repair
- Thin and light reflecting ceramic surface
- Minimum amount of joints
- Minimum time for realization
- Maximal tolerance towards deformations (such as shrinkage / creeping in sub-floor).



Products and services offered

Verra AB will study the needs and requests of the Customer and propose a suitable cladding system.

All components and aspects on the chosen systems are described in relation to the needs.

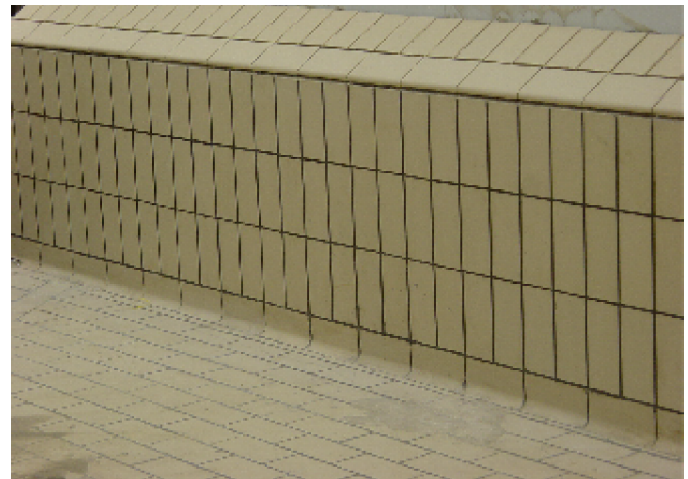
Design assistance is offered with the aim of safe-guarding the best possible result.

All materials of the chosen system are delivered.

Information to and training of installation staff is offered with the aim of setting the laying team off to best possible start and practice.

Examples of applications

- Production areas in industries where **chemical resistance** is important, such as
Chemical industry and
Food processing industry
Drink processing industry
- Production areas where **hygiene and easy cleaning** is important
Food, catering, kitchens
Medical industries
Hospitals and wards
- Public areas with heavy wear
- Wet areas in public baths
- Containers for liquids
Tanks
Basins
Other containers for liquids - C600 with added/exchanged components



About Verra AB

Verra AB has its base in a long time experience of north European production and use of clinker tiles and accessories. The company cooperates with long time producers/suppliers of high-class material and specializes in complete industrial flooring and cladding solutions, guaranteeing that the entire set of components in the chosen solution makes up a complete system with no weak link and suitable for the specified needs.

Contacts

Verra AB, Tågagatan 58, SE-25441 Helsingborg, Sweden.
Phone +46 (0)42 20 62 60 Fax +46 (0)42 24 33 60
info@verraab.se